



APRAN



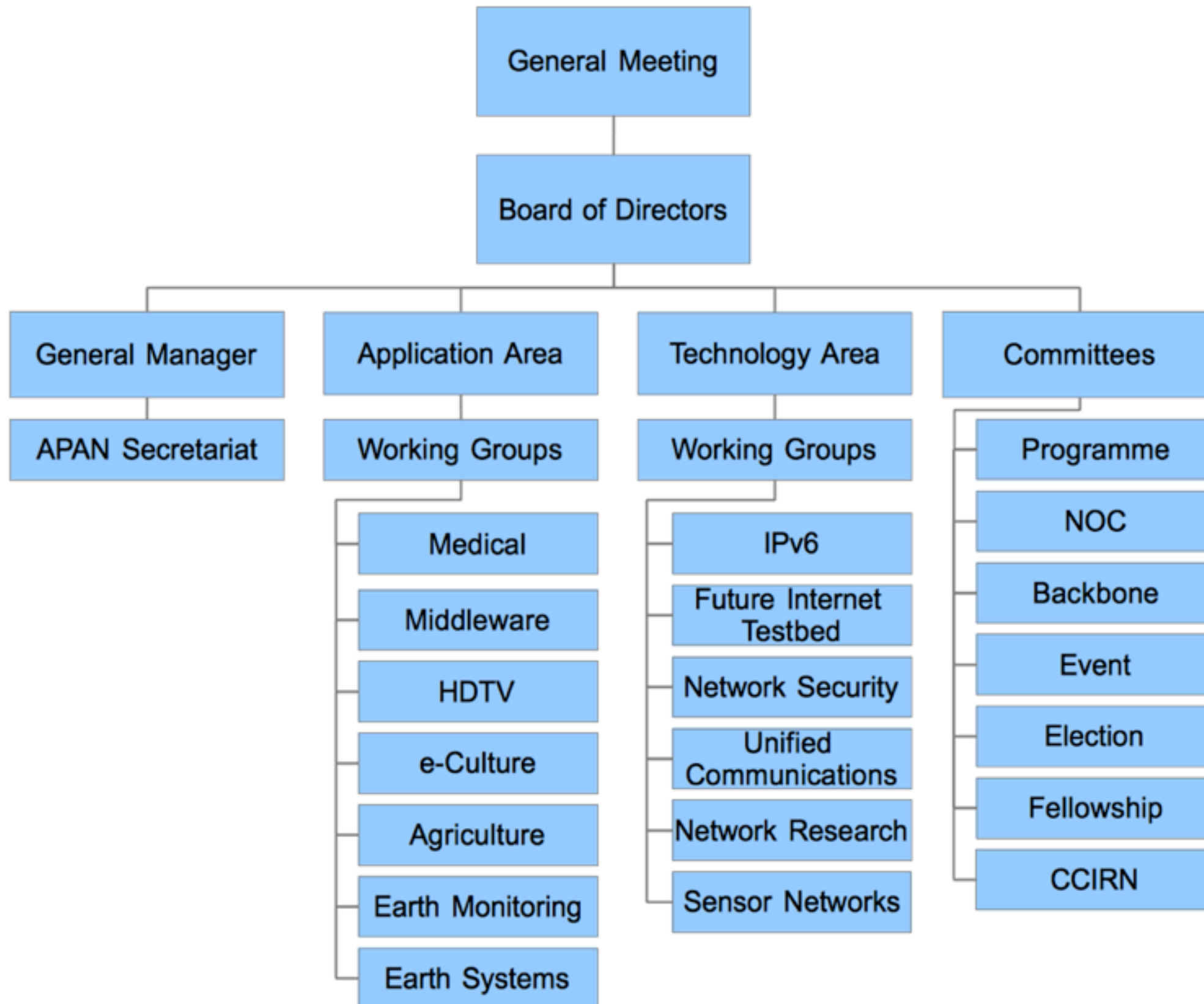
APAN Update

Yasuichi Kitamura
kita@jp.apan.net

*Asia-Pacific Advanced Network (APAN)
Now Ltd.*

- Non-profit company registered in Hong Kong
- Transition was completed.
 - consortium → company

APAN structure



APAN meetings

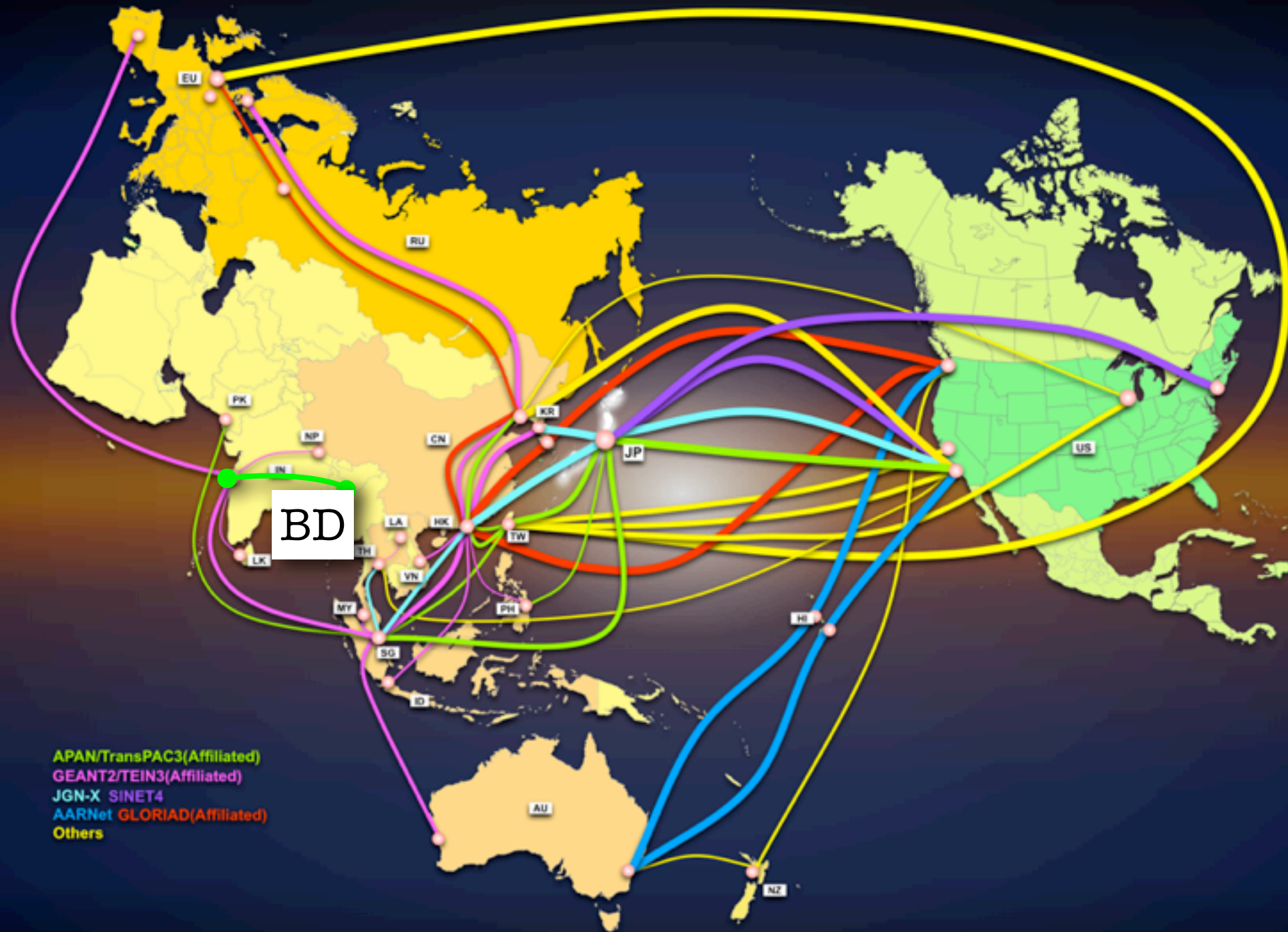
2012	Chiang Mai	Colombo
2013	Honolulu	Daejeong 19-23, August
2014	Jakarta 20-24, January	Taipei September
2015	Fukuoka 2-6, March	

APAN meetings

- Now, the schedule is at ISOC event calendar.

Circuits

Asia-Pacific Backbone Topology



As of October 17th 2012

Circuits

- TEIN (Trans-Eurasia Information Network) is planning to extend the connectivity to...
 - BT
 - KH
 - LA
 - and more
- TEIN is now at the 4th project.
 - The coordination organization moved from UK to KR.

Research trends

- About IPv6, APAN has been active since 1997.
- Words of Openflow and SDN (Software Defined Network) are popular.
- 100G is partially discussed.
- Authorization and Authentication activity is now collaborating with Internet2 (US) and TERENA (EU).
- Agricultural activity has the collaboration with the sensor network.
- Medical activity is now connecting with close to 200 medical institution with exchanging...
 - live surgical video
 - high resolution still image
 - and more.
- Big science is going on.



APRAN

